



GENESIS RENEWABLE SOLUTIONS

Diesel Generator LG50CS Data Sheet

General Features

- **Engine** 4BTA3.9-G2 CUMMINS
- **Alternator** UCI224D STAMFORD
- **Controller** MRS16 IL3 Comap Made in Czech Republic

Prime power	40.0 kW / 50.0 kVA
Standby power	44.0 kW / 55.0 kVA

- Electronic speed control
- 24V starting battery, maintenance-free type, connecting cables
- Equipped with ABB MCCB / RCD Australian Certified Breakers
- Equipped with industrial silencer and flexible exhaust hose
- Radiator 50°C max, fan driven by belt with safety guard
- Noise Level 66dB @ 7 metres
- 24V charge dynamo
- Equipped with 260 L bonded base tank
- Design comply to ISO8528/GB2820
- Absorber (anti instant braking)
- Padlockable Battery Isolator Installed

General Ratings

Voltage V	Power				Frequency (Hz)	Phase	P.F (COSφ)	Prime Current (Amps)
	Prime		Standby					
	kw	kva	kw	kva				
415 / 240	40.0	50.0	44.0	55.0	50	3	0.8	70.0

Prime power

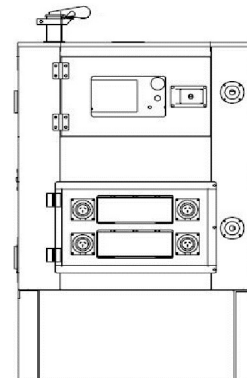
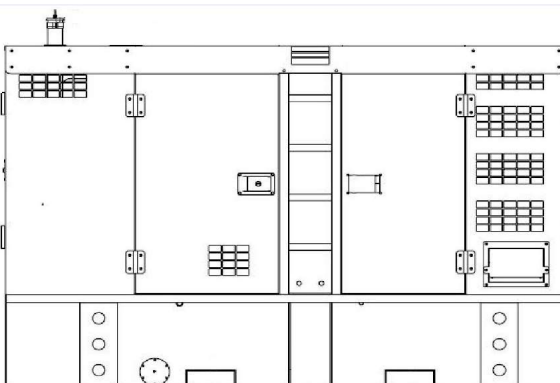
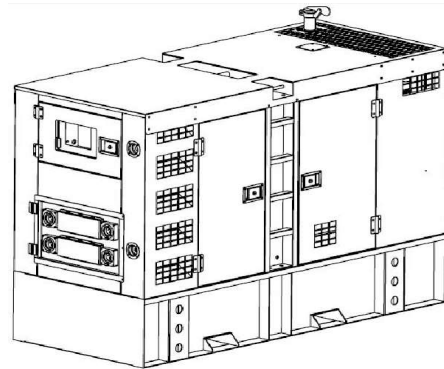
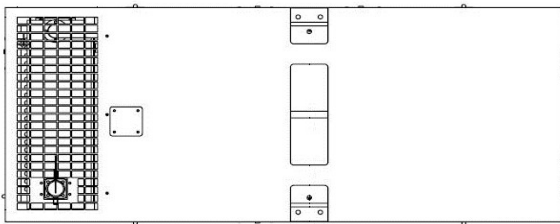
This rating is for the supply of continuous electrical power at variable load. A 10% overload capability is available for a period of 1 hour within each 12-hour period of operation.

Standby power

This rating is for the supply of continuous electrical power at variable load in the event of utility power failure. No overload is permitted.

Dimension And Weight

Size(L×W×H): 2280×950×1550 (mm)
Net Weight : 1,250 (kgs)





GENESIS RENEWABLE SOLUTIONS INC.

Diesel Generator LG50CS Data Sheet

Engine Specifications

1	Engine manufacturer	Cummins
2	Engine model	4BTA3.9-G2
3	Number of cylinders	4
4	Cylinder arrangement	Vertical in line
5	Cycle	4 stroke
6	Aspiration	Turbo Charged
7	Bore×Stroke(mm×mm)	102 x 120
8	Displacement (Liter)	3.9
9	Compression Ratio	17.3 : 1
10	Prime power/speed (kW/RPM)	50.0 / 1500RPM
11	Standby power/speed (kW/RPM)	55.0 / 1500RPM
12	Speed governor	Electronic Speed Control
13	Cooling system	Water-cooled maximum 40 degrees centigrade
16	Fuel consumption at 100% load (L/H)	12.9
17	Fuel consumption at 75% load (L/H)	10.0
18	Fuel consumption at 50% load (L/H)	7.0
19	Starter motor	DC 24V

Alternator Specifications

1	Alternator manufacturer	Stamford
2	Alternator model	UCI224D
3	Exciter type	Single bearing, Brushless, Self-excited with AVR
4	Rated output prime power	50.0 KVA
5	Rated speed	1500 RPM
6	Rated frequency	50 Hz
7	Phase	3
8	Rated voltage	415V / 240V
9	Power factor	0.8
10	Voltage adjust range	≥5%
11	Voltage regulation NL-FL	≤±1%
12	Insulation grade	H
13	Protection grade	IP23

Main Electrical Performance Data

Voltage				Frequency			
Stable Regulation rate	Fluctuation	Recovery time	Instantaneous Regulating rate	Stable regulation rate	Instantaneous regulating rate	Recovery time	Fluctuation
+/-2.5%	0.5%	1.5s	+20%/-15%	+5%	+/-10%	5S	0.5%

Control System

Comap Protection	Model Parameter
● Low oil pressure	● Voltage ● Oil pressure
● High water temp	● Current ● Oil temp
● Over speed	● Power ● Power factor
● Over crank	● Speed ● Running time
● Over load	● Frequency ● Water temp
● Over/low volt	● Battery voltage
● Over/low frequency	
● Battery charge failure	

MRS16 IL3 PHOTO

